

Halffield McCoy

WWW.TRAILSHEAVEN.COM

Trails



Proudly Sponsored By
Kawasaki

6 TRAIL SYSTEMS. RIDE 'EM ALL!



HATFIELD-MCCOY TRAILS

Pinnacle Creek, pg.18

Trailhead Location:
Pineville, WV



Indian Ridge, pg. 14

Trailhead Location:
Ashland, WV



Buffalo Mountain, pg. 16

Trailhead Locations (2):
Matewan, WV and
Williamson, WV



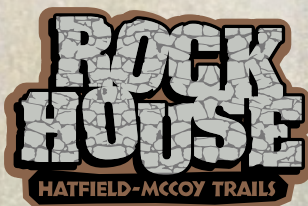
Bearwallow, pg. 12

Trailhead Location:
Ethel, WV



Pocahontas, pg. 20

Trailhead Location:
Bramwell, WV



Rock House, pg. 22

Trailhead Location:
Man, WV

THE EAST COAST'S TOP-RATED TRAILS!

The award-winning Hatfield-McCoy Trails offer something for every skill level, with over 500 miles of professionally managed trails.

Trail Systems are detailed beginning on **page 12**. For lodging and other amenities, see **page 26**.



All Hatfield-McCoy Trails Systems are located in southern West Virginia. For an interactive map with trailhead locations, visit www.TrailsHeaven.com/map



TRAIL INFORMATION

PLAN YOUR TRIP

- ❑ **Purchase User Permits** from any staffed trailhead* or online at www.TrailsHeaven.com. Permits are also available at retail locations listed on pages 26–29.
- ❑ **Pick a trail—or two or three!** Our six unique trail systems are detailed beginning on page 12.
- ❑ **Arrange to stay.** Lodging and local attractions for each trail system can be found on pages 26–29.
- ❑ **Gear up.** Helmets and protective eyewear are required. Familiarize yourself with the Trail Rules on page 10 and get revved up for a fun, safe time.
- ❑ **Grab your ride and roll!** Trails are open to ATVs, UTVs and dirtbikes. Select trails are also open to ORVs.

**Trailheads at Ashland, WV (Indian Ridge) and Bramwell, WV (Pocahontas) are not staffed.*

WV RESIDENT \$26.50	USER PERMITS
NON-RESIDENT \$50.00	One permit provides full access to all 6 Hatfield-McCoy Trail Systems. Permits are valid through December 31 of the calendar year purchased.

Prices are subject to change and include 6% WV sales tax. Residents pay lower user fee due to West Virginia state tax dollars which help fund trail development. Valid West Virginia driver's license required for Resident rate.

Individuals with a valid military ID can purchase a WV Resident User Permit regardless of their residency.

ATV RENTALS/OUTFITTERS

The Hatfield-McCoy Regional Recreation Authority (HMRRA) does not rent ATV's or ATV equipment. The HMRRA does not endorse or have any affiliations with any particular ATV outfitter. However, we are always happy to refer guests to ATV outfitters in our area. Please call **1-800-592-2217** for a referral.



Interactive map with all trailhead locations available at www.TrailsHeaven.com/map



The Hatfield-McCoy Trails have received praise from Dirt Wheels, ATV Action and ATV Magazine, as well as television features on the Outdoor and Discovery channels!

DID YOU KNOW?

- All Hatfield-McCoy Trails are open **365 days a year** from half an hour before sunrise until half an hour after sunset. Experience all four seasons in the mountains!
- One permit gives you access to over **500 miles of trails** for a full calendar year.
- You can ride to gas stations, restaurants, lodging, trailheads and more in our **ATV-friendly towns**.



For updates on trail conditions, events, and news, sign up for our e-newsletter at www.TrailsHeaven.com

TRAIL SAFETY

TRAIL USAGE



Open to off-road motorcycles



Open to UTVs/side-by-sides (see rules below)



Open to All-Terrain Vehicles



Signs with a red slash indicate the route is not open for the particular use



Open to ORVs (jeeps, trucks, dune buggies, etc.)



ORVs must be protected with rollover protection on Most Difficult trails



The Hatfield-McCoy Trails provide users with a safe, legal and exciting place to ride. Trails are developed with the Nick J. Rahall, II Appalachian Transportation Institute (RTI) at Marshall University to meet the highest standards.

All Hatfield-McCoy Trail Systems are patrolled by West Virginia Natural Resource Police Officers who enforce all safety laws and policies. Our staff performs daily maintenance to ensure the quality and safety of our trails and land.

All trails are professionally mapped (*see Difficulty Ratings on page 7*). Please be aware the trail layouts can change in response to conditions. Updated trail maps are available at each trail head to alert riders of changes.



DIFFICULTY RATINGS

LEAST DIFFICULT



Easiest

The **Easiest** (green) trails are generally wide and more level.



More Difficult

The **More Difficult** (blue) trails are generally more narrow and uneven, with some rocks and obstacles on the paths.



Most Difficult

The **Most Difficult** (black) trails can be extremely steep, with larger rocks and more obstacles on the sometimes-overgrown paths.



Most Difficult

The **Most Difficult** (black/red) trails combine the aspects of the Most Difficult trails, along with the stipulations that no riders under 18, no machines under 200cc and no two-wheel drive machines are allowed.

MOST DIFFICULT

SINGLE TRACK TRAILS



More Difficult



Most Difficult

Single Track (orange) trails are divided into More Difficult and Most Difficult and are for experienced riders only.

TRAIL SAFETY

“THE HATFIELD-MCCOY TRAILS ARE PROBABLY THE BEST KNOWN AND EASIEST TO MANAGE BECAUSE THEY ARE MARKED SO WELL.”

Russ Ehnes, Executive Director of the National Off-Highway Vehicle Conservation Council



RIDER SAFETY CHECKLIST

- Follow all Trail Rules (pages 10–11).
- Check and test your vehicle before riding.
- Always ride with someone else.
- Keep a safe riding distance from others.
- Be mindful of the weather; dress appropriately.
- Be prepared with a first aid kit, tools, spare equipment and a cell phone or two-way radio.

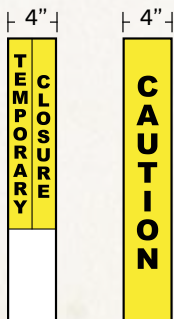
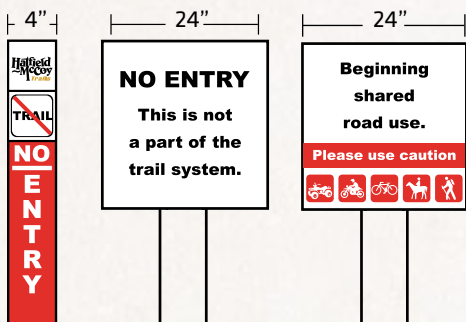


For any trail emergency, dial 911. 911 Call Centers work with local emergency response teams to ensure quick response times in the event of an accident.

TRAIL SIGNAGE

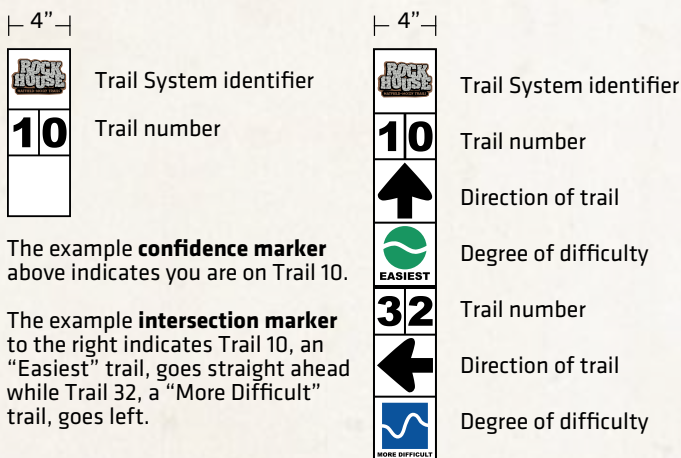
TRAIL MANAGEMENT

No entry signs indicate off-limit areas. Temporary closure signs indicate a trail is closed due to construction or repair. Caution indicates trail hazard ahead. Other signs may signal a trail is heavily traveled with authorized non-trail traffic such as coal trucks, emergency vehicles, heavy equipment or land owners.



The overall goal of the Hatfield-McCoy Trails is to develop a world-class trail system with an emphasis on safety throughout all of our 6 trail systems in southern West Virginia.

CONFIDENCE/INTERSECTION MARKERS



The example **confidence marker** above indicates you are on Trail 10.

The example **intersection marker** to the right indicates Trail 10, an “Easiest” trail, goes straight ahead while Trail 32, a “More Difficult” trail, goes left.

TRAIL RULES

1. User permits required.
2. Everyone must wear a DOT, SNELL or other approved helmet and eye protection.
3. All operators and passengers on an ATV, UTV or off-road motorcycle must follow manufacturers' recommendations.
4. All operators and passengers on an ATV, UTV or off-road motorcycle must meet manufacturers' minimum age requirements.
5. Obey all signs, gates and barriers.
6. Stay on marked trails.
7. Adult supervision is required for those under age 16.
8. Do not leave any trash or litter behind.
9. No alcoholic beverages may be consumed or carried.
10. Drive or ride at a speed reasonable for conditions.
11. No night riding.
12. No camping.
13. No fires.
14. Stay alert at all times, be aware of oncoming traffic.

Insure Your Vehicle With Rider!

Rider Insurance, the Official Insurance Sponsor of the Trails, provides excellent coverage at a great price.

For more information on coverages, discounts, and eligibility, or for a free quote, call 1-800-595-6393 or visit www.Rider.com.





ORV-SPECIFIC RULES

1. ORVs are permitted on designated trails only.
2. Everyone must wear a DOT, SNELL or other approved helmet and eye protection.
3. Driver and passengers must have valid trail permits.
4. A valid driver's license is required to operate an ORV.
5. All passengers must be over 8 years of age, or 4'9" tall. No booster or car seats are allowed.
6. Seat belts must be worn at all times. The number of passengers is limited to the number of installed seat belts.
7. ORVs are required to have a roll cage on all Most Difficult (black and black/red) trails.



UTV-SPECIFIC RULES

The driver and passengers of a UTV must:

1. Everyone must wear a DOT, SNELL or other approved helmet and eye protection.
2. Wear seat belts at all times; the number of passengers is limited to the number of factory installed seat belts.
3. Keep their hands, arms, feet, head and legs inside the vehicle at all times during operation.
4. Possess a valid owner's manual for the machine being operated.
5. Stay on designated trails. UTVs are permitted on Easiest, More Difficult and Most Difficult Black. UTVs are not allowed on Most Difficult Red/Black Double Diamond.



Note: Starting Spring 2016, ORVs (jeeps, trucks, dune buggies, etc.) are welcome at Bearwallow.

Bearwallow is located near the ATV-friendly town of Logan, WV. It is one of the original three systems of the Hatfield-McCoy Trails and is commonly known for its single track and Most Difficult-rated trails. It's mix of easy-riding scenic vistas and difficult trails make it one of the more popular systems for the Hatfield-McCoy Trails. This trail system has direct access to gas, food and lodging. Bearwallow is the only trail to be open to ORVs as well as ATVs, UTVs and off-road motorcycles.



ORVs must be equipped with **rollover protection** on black (Most Difficult) and black/red (Most Difficult) trails. **Helmets are required. See full ORV-specific Rules on page 11.**

TRAILHEAD AMENITIES

- » 2-acre parking area/Restroom facilities
- » Permits and souvenirs available

Bearwallow trailhead is staffed from 9:00 a.m. to 2:00 p.m., 7 days a week (except major holidays). All Hatfield-McCoy Trails are open 365 days a year from half an hour before sunrise until half an hour after sunset. The Country Roads Byways Visitor's Center is located on Route 73 toward Logan. This visitor's center provides access to the City of Logan connector to the Bearwallow Trail system.

For area lodging and attractions, please see page 26.

DRIVING DIRECTIONS

TRAILHEAD LOCATION

247 Bearwallow Drive, Ethel, WV 25076

Driving north or south on US 119, take the Logan exit. Follow Rt. 73 east to Rt. 10 south. Pass the town of Logan and make a left onto Rt. 17 north. Go under the train trestle (Only 9' high). Make a left onto Red Campbell Road. Make the second right and follow the road to the trailhead center. If you cannot fit under the train trestle, make a left onto Rt. 17 truck route, follow the signs to Rt. 17 north and make a left. Ten minutes from Logan.



TRAIL BREAKDOWN

Percentage of trails by difficulty level:



9%
Easiest



45%
More Difficult



31%
Most Difficult











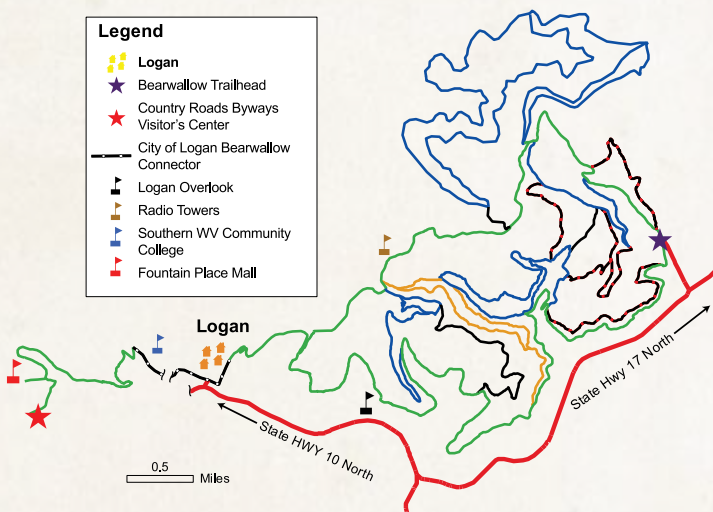
6%
Most Difficult



9%
Single Track

Legend

-  Logan
-  Bearwallow Trailhead
-  Country Roads Byways Visitor's Center
-  City of Logan Bearwallow Connector
-  Logan Overlook
-  Radio Towers
-  Southern WV Community College
-  Fountain Place Mall



Trail map shown for illustrative purposes only. Grab an up-to-date map at the trailhead each day you ride.



Note: System is not open to ORVs (jeeps, trucks, dune buggies, etc.)

Located near Ashland, WV, this system offers a nice variety of trails of all difficulty levels. This trail system offers community access to the ATV-friendly towns of Northfork and Keystone. Nearby communities offer gas, food and lodging. The trail system also connects with two other Hatfield-McCoy Trail Systems—Pinnacle Creek and Pocahontas—to allow extended off-road trips.

TRAILHEAD AMENITIES

- » 2-acre parking area/Restroom facilities
- » Permits are **not available** at Indian Ridge trailhead. Guests may purchase permits at any authorized retailer (see pages 26-29), or online at www.TrailsHeaven.com.

Indian Ridge trailhead is **not staffed**. All Hatfield-McCoy Trails are open 365 days a year from half an hour before sunrise until half an hour after sunset.

For area lodging and attractions, please see page 26.

DRIVING DIRECTIONS

TRAILHEAD LOCATION

In the town of Ashland, WV near Northfork, WV

Driving north or south on Interstate-77, take Exit 1, follow truck route US 52 N through Bluefield to US 52 North 26.3 miles to Northfork, make a sharp right turn North onto Country Road 17 (Northfork-Ashland Road). Continue on County Road 17 another 6.5 miles to the entrance of the Ashland Trailhead.



TRAIL BREAKDOWN

Percentage of trails by difficulty level:



18%
Easiest



46%
More Difficult



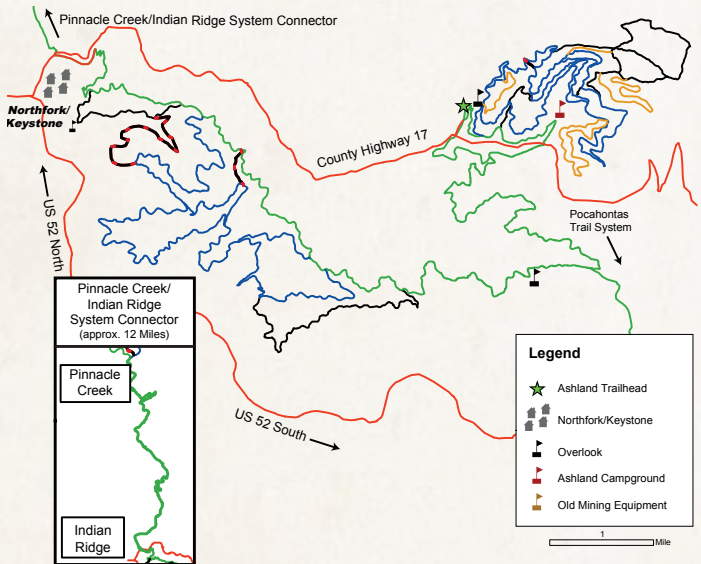
25%
Most Difficult



2%
Most Difficult



9%
Single Track



Trail map shown for illustrative purposes only. Grab an up-to-date map at the trailhead each day you ride.



Note: System is not open to ORVs (jeeps, trucks, dune buggies, etc.)

Buffalo Mountain is known as the most historic trail system, as well as the one with the most single track trails, making it incredibly popular with dirt bike enthusiasts. This system has three community connectors providing direct access to the ATV-friendly towns of Matewan, Delbarton and Williamson, WV. Each of these towns offer gas, food and lodging.

TRAILHEAD AMENITIES

- » 2-acre parking area/Restroom facilities
- » Permits and souvenirs available

Buffalo Mountain has two trailheads. Both are staffed from 9:00 a.m. to 2:00 p.m., 7 days a week (except major holidays). All Hatfield-McCoy Trails are open 365 days a year from half an hour before sunrise until half an hour after sunset.

For area lodging and attractions, please see page 26.

DRIVING DIRECTIONS

TRAILHEAD LOCATIONS (2)

34 Oakwood Heights Road, Williamson, WV, 25661;
Main Street, Matewan, WV 25686

Buffalo Mountain Trailhead: From US 119, follow Rt. 52 south through Williamson. The trailhead center is eight miles outside of Williamson.

Matewan Trailhead: From US 119, follow Rt. 52 south to Rt. 49. Turn right on Rt. 49 to the town of Matewan. The trailhead center is located approximately 1/2 mile on the main loop of Matewan.



TRAIL BREAKDOWN

Percentage of trails by difficulty level:



28%
Easiest



22%
More Difficult



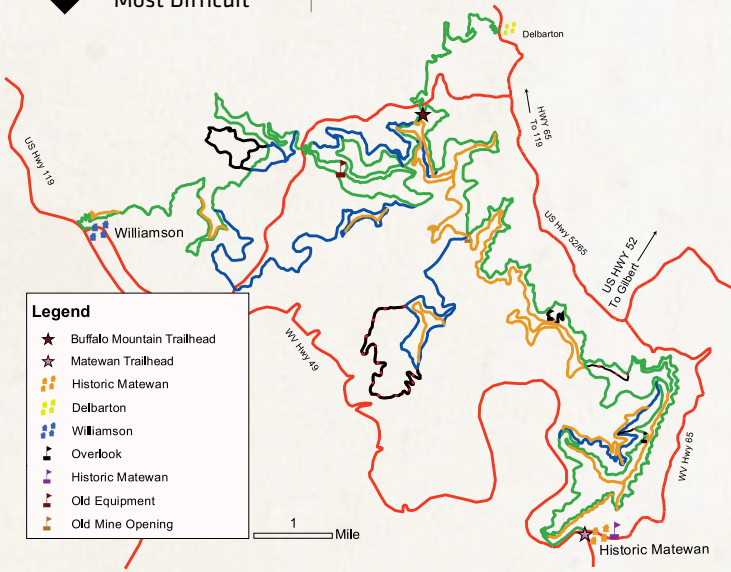
15%
Most Difficult



4%
Most Difficult



31%
Single Track



Trail map shown for illustrative purposes only. Grab an up-to-date map at the trailhead each day you ride.



HATFIELD-MCCOY TRAILS



Note: System is not open to ORVs (jeeps, trucks, dune buggies, etc.)

Pinnacle Creek, with direct connections to the ATV-friendly towns of Mullens and Pineville, WV, is known for its breathtaking scenic views and proximity to world-class whitewater rafting and snow skiing—both less than an hour away. This trail system has direct access to gas, food and lodging. The trail system also connects with two other Hatfield-McCoy Trail Systems—Indian Ridge and Pocahontas—to allow extended off-road trips.

TRAILHEAD AMENITIES

- » 2-acre parking area/Restroom facilities
- » Permits and souvenirs available

Pinnacle Creek trailhead is staffed from 9:00 a.m. to 2:00 p.m., 7 days a week (except major holidays). All Hatfield-McCoy Trails are open 365 days a year from half an hour before sunrise until half an hour after sunset.

For area lodging and attractions, please see page 26.

DRIVING DIRECTIONS

TRAILHEAD LOCATION

2733 Pinnacle Road, Pineville, WV 24874

From I-77, take the Robert C. Byrd exit near Beckley. Travel south on Rt. 16 toward Sophia 3.5 miles. Make right on to Rt. 97/54 toward Twin Falls State Park. At the intersection of Rt. 97 and Twin Falls State Park entrance, make a right continuing on Rt. 97 toward Pineville. At the intersection of Rt. 97 and Rt. 10, bear left onto Rt. 10 south. Travel approximately 1 mile and turn right onto Route 16 south. Travel 1/2 mile then turn left following the signs for the Pineville trailhead. Finally, drive 2.8 miles to the trailhead center which is located on the left.



TRAIL BREAKDOWN

Percentage of trails by difficulty level:



33%
Easiest



41%
More Difficult



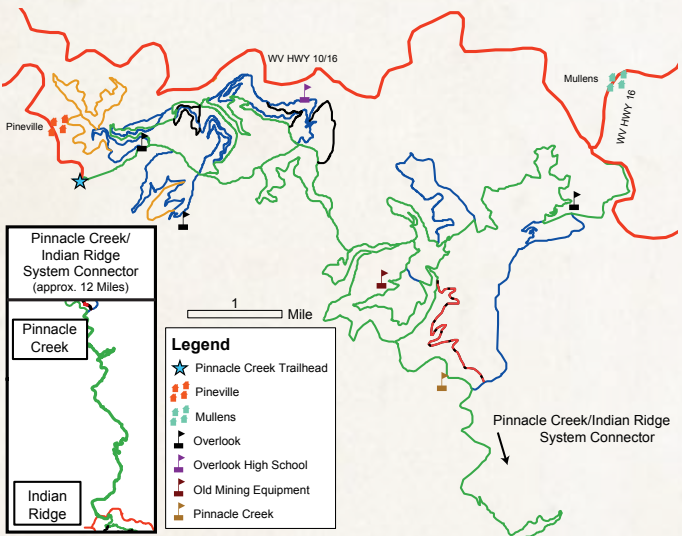
8%
Most Difficult



10%
Most Difficult



8%
Single Track



Trail map shown for illustrative purposes only. Grab an up-to-date map at the trailhead each day you ride.



Note: System is not open to ORVs (jeeps, trucks, dune buggies, etc.)

Pocahontas Trail System links up to two other Hatfield-McCoy Trail Systems—Indian Ridge and Pinnacle Creek—making for the most continuous miles of trails east of the Mississippi. The trailhead is located in the town of Bramwell, historically known for its numerous millionaire homes from the early 20th century. This trail system has direct access to gas, food and lodging.

TRAILHEAD AMENITIES

- » 2-acre parking area/Restroom facilities
- » Permits are **not available** at Pocahontas trailhead. Guests may purchase permits at any authorized retailer (see pages 26-29), or online at www.TrailsHeaven.com.

Pocahontas trailhead is **not staffed**. All Hatfield-McCoy Trails are open 365 days a year from half an hour before sunrise until half an hour after sunset.

For area lodging and attractions, please see page 26.

DRIVING DIRECTIONS

TRAILHEAD LOCATION

174 Simmons Avenue, Bramwell, WV 24715

Driving north or south on I-77, take Exit 1 at Bluefield. Follow WV 52 N for Approximately 15 Miles to Bramwell. Take left onto Route 120, take right continuing on Route 120 for 0.4 miles. Trailhead is located on the left.



TRAIL BREAKDOWN

Percentage of trails by difficulty level:



22%
Easiest



47%
More Difficult



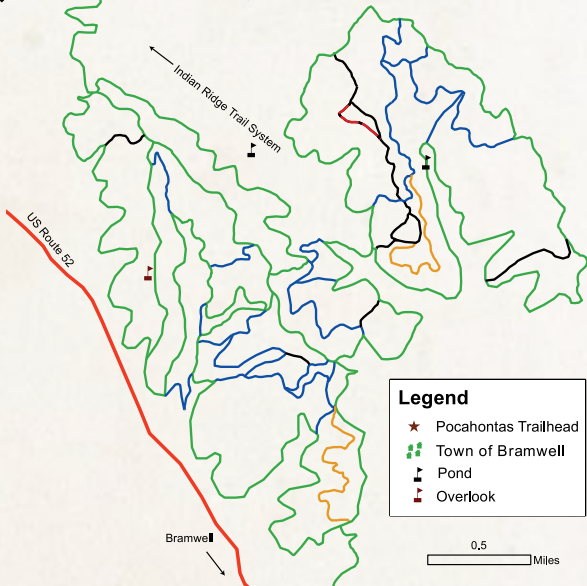
22%
Most Difficult



3%
Most Difficult



6%
Single Track



Trail map shown for illustrative purposes only. Grab an up-to-date map at the trailhead each day you ride.

ROCKHOUSE

HATFIELD-MCCOY TRAILS



Note: System is not open to ORVs (jeeps, trucks, dune buggies, etc.)

With over 100 miles of trails, RockHouse offers a wide variety of trails at all difficulty levels. It is especially popular with riders who are looking for an “Extreme” riding experience. This trail system has direct access to the ATV-friendly towns of Man and Gilbert, WV. Each of these towns offer fuel, food and lodging, along with a generous helping of southern hospitality.

TRAILHEAD AMENITIES

- » 2-acre parking area/Restroom facilities
- » Permits and souvenirs available

Rock House Trailhead is staffed from 9:00 a.m. to 2:00 p.m., 7 days a week (except major holidays). All Hatfield-McCoy Trails are open 365 days a year from half an hour before sunrise until half an hour after sunset.

For area lodging and attractions, please see page 26.

DRIVING DIRECTIONS

TRAILHEAD LOCATION

83 Rockhouse Creek Road, Man, WV 25635

Driving north or south on US 119, take the Logan exit. Follow Rt. 73 east to Rt. 10 south. Take Rt. 10 for 16 miles to Rt. 80 south. Bear right onto Rt. 80, cross the bridge and the railroad tracks. Go straight, cross the river and make a left at the stop sign. Follow the road approximately 1/2 mile to the trailhead center. This trail system is approximately 1/2 mile to the nearest town of Man and 12 miles to Gilbert, WV.



TRAIL BREAKDOWN

Percentage of trails by difficulty level:



31%
Easiest



29%
More Difficult



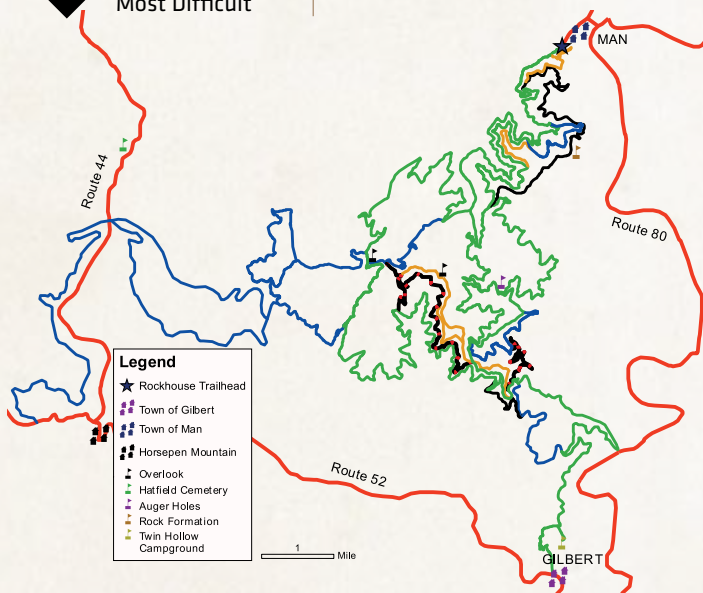
16%
Most Difficult



8%
Most Difficult



16%
Single Track



Trail map shown for illustrative purposes only. Grab an up-to-date map at the trailhead each day you ride.





TRAIL HEADS AND VISITOR'S CENTERS

Our facilities are staffed seven days a week (except major holidays) during the following hours:

- **Hatfield McCoy Visitor's Center** from 9:00 a.m. to 5:00 p.m.
- **Country Roads Byways Visitor's Center** from 9:00 a.m. to 5:00 p.m.
- Trail heads (except **Indian Ridge** and **Pocahontas**) from 9:00 a.m. to 2:00 p.m.

All staffed locations offer permits and souvenirs. All Hatfield-McCoy Trails are open 365 days a year from half an hour before sunrise until half an hour after sunset. **Indian Ridge** and **Pocahontas** trail heads have rest rooms and parking/loading spaces. Permits and souvenirs cannot be purchased at these locations.

The Hatfield-McCoy Visitor's Center is located off US 119, less than 20 miles south of Charleston, WV.

The Country Roads Byways Visitor's Center is located on Route 73 toward Logan. This visitor's center provides access to the City of Logan connector to the Bearwallow Trail system.

Both facilities offer:

- User Permits (always in stock)
- Complete Line of Hatfield-McCoy Trails Merchandise
- Maps, Brochures, History and Cultural Information
- and Much More!

For more information, call the Hatfield-McCoy Visitor's Center at **(304) 369-9342** or the Country Roads Byways Visitor's Center at **(304) 752-4645**.

LODGING & ATTRACTIONS

★ = Authorized retailer for Hatfield-McCoy Trail Permits

BEARWALLOW

LODGING

Almost Heaven Cabin Rentals

(304)784-3885

(304)752-0954

www.wvagetaway.com

Cabins are equipped with hot tub, pool table, pinball, fireplace, full kitchen & much more.

Best Western Logan Inn★

866-700-7293

(304) 831-2345

www.bestwesternloganinn.com

Kathryns-Kabins★

(304) 784-3833

(304) 369-2627

www.kathryns-kabins.com

4 cabins and 1 cottage, heat and air, complete bathroom.

Trail Riders Escape★

(304) 752-5534

www.trailridersescape.com

Newly furnished lodge sleeps 12 or more. Park your trailer and ride your ATV to Bearwallow.

Little Coal River Campground★

(304) 369-1951

littlecoalrivercampground.com

15 RV sites, primitive tent camping, RV and cabin rentals.

Pappy's Cabin at the Pond★

304-687-5985

304-369-4827

www.pappyscabinatthepond.com

VISITOR INFO

Hatfield McCoy CVB★

(304) 752-6020

www.hatfieldmccoycvb.com

Hatfield-McCoy Trails' Visitors Center★

(304) 369-9342

Located off US 119, less than 20 miles south of Charleston, WV.

ATV SALES AND SERVICE

Logan Motorcycle Sales★

(304) 752-4145

loganmotorcyclesales.net

Full service facility for Honda

and Yamaha. Parts, sales, and service. Financing available.

Keefer's Kawasaki & Suzuki★

(304) 752-2245

www.keeperpowersports.net

Full service facility for Suzuki and Kawasaki. Parts, sales, and service. Financing available.

BUFFALO MOUNTAIN

LODGING

Blue Goose Inn★

(304) 426-5110

www.BluegooseinnWV.com

Direct access to Buffalo Mountain only 300 yds. Close to gas, food and more.

Historic Matewan House Bed and Breakfast★

1-866-878-8178

historicmatewanhouse.com

Direct trail access 1 mile from Buffalo Mountain trails.

Open Trail Lodging★

(304) 475-3761

www.opentraillodging.com

Split Pine Lodging★

(304) 475-4118

splitpinelodging.com

Your home away from home.

Sycamore Inn★

(304) 235-3656

800-446-6865

www.sycamoreinn.com

63-unit motel in Williamson, ride directly to Buffalo Mountain trails.

ATV SALES AND SERVICES

Hatfield-McCoy Power Sports★

(606) 237-7311

hatfieldmccoypowersports.net

Full service facility for Honda, Kawasaki and KTM.

VISITOR INFO

Tug Valley Chamber

(304) 235-5240

tugvalleychamber.com



INDIAN RIDGE

LODGING

Ashland Resort★

1-888-862-2322

www.atvresort.com

Luxury cabins as well as spacious RV and tent sites.

Black Dog Ranch★

(304) 384-7573

westvirginiablackdogranch.com

Located near the Indian Ridge Trailhead and less than an hour from Pinnacle Creek Trailhead.

Wild Willy's ATV Rezort★

(304) 862-2312

www.wildwillysatvrezort.com

Located in the heart of 4-wheeling country at Hatfield-McCoy Trails' Indian Ridge trail system.

VISITOR INFO

Mercer County CVB

(800) 221-3206

(304) 325-8438

www.visitmercercounty.com

McDowell County CVB

(304) 436-4260

PINNACLE CREEK

LODGING

Cow Shed Motel & Restaurant★

(304) 732-7000

www.cowshedmotel.com

Ride straight from the Motel to the Pinnacle Creek Trails.

Sam's Guest House★

(304) 320-9533

www.samsguesthouse.net

Cable TV, computer and printer with internet, phone, fully equipped kitchen, and AC.

VISITOR INFO

Wyoming County CVB

(304) 732-7909

www.wyomingcounty.com

LODGING & ATTRACTIONS

★ = Authorized retailer for Hatfield-McCoy Trail Permits

POCAHONTAS

LODGING

Ashland Resort★

1-888-862-2322
www.atvresort.com
Luxury cabins as well as spacious RV and tent sites.

Berglund Outdoors★

(540) 992-5777
www.berglundoutdoors.com

Bramwell ATV Resort★

(757) 831-2106
www.bramwellatvresort.com

Bramwell WV Vacation Rentals★

(813) 748-9403
www.bramwellrentals.com
The Main Street Suites are located on Main Street above the shops in Historic Bramwell, WV.

Buffalo Trail★

(855) 349-9871
www.buffalotrailcabins.com
We offer newly constructed cabins, cottages, tree houses and RV campsites.

Buffalo Trail Restaurant★

(855) 349-9871
www.buffalotrailcabins.com
Come check out our full service restaurant and bar.

Hillbilly Hideaway★

(304) 248-7308
hillbillyhideawayatvresort.com
We offer 4 houses and also offer tent sites with plenty of parking.

Me & Mr. Jones Estates★

(304) 827-2887
(407) 301-3292
www.atv-lodge.com
Enjoy the tranquility of our national historic retreat.

Pocahontas ATV Resort★

(304) 449-4683
www.pocahontasatvresort.com
We offer cabins, RV spaces, and also offer tent camping here on our 10 acre mountain top.

ATV SALES AND SERVICES

Miller's ATV Superstore★

(304) 589-5277
www.millersatv.com



ROCKHOUSE

LODGING

Big Bear Lodge★

(304) 664-9516
www.bigbearlodgewv.com
Private setting in the ATV-friendly town of Gilbert, 1 mile from the community connector.

Browning Fork Trailhouse★

(304) 664-8211
(304) 784-RIDE (7433)
browningforktrail.tripod.com
5 separate facilities that can be rented together to large groups or separately to small groups.

Colonial Motel and Restaurant★

(304) 583-2800
www.colonialmotelmanwv.com

Devil Anse Trailhouse★

(304) 664-3273
www.devilansetrailhouse.com
We can accommodate 1-25 people.

Hawks Riverfront Cabins★

(304) 664-8234
(304) 928-9212
hawkriverfrontcabins.com
Enjoy riding the trails and relaxing by the river.

Hawk's Riverside Lodge★

(304) 664-9709
hawkrsiversidelodge.com
Hawks Riverside Lodging is centrally located only a short ride from the Town of Gilbert.

Livingood Lodging★

(304) 664-8051
www.livingoodlodging.com
Cabins and houses allow access to Rockhouse connector, food, gas and more.

Rockhouse Lodge & The Depot Lodge★

(304) 583-6833
(304) 687-4657
www.rockhouselodge.com
Large groups welcome! Direct access to trail

Twin Hollow Campground and Cabins★

(304) 664-8864
twinhollowcampground.com
Park and ride 500 ft from trail. Direct access to RockHouse Trail.

V-8 Motor Lodge★

(304) 664-2555
www.v-8motorlodge.com
Custom-built cabin on the Guyandotte River sleeps up to 6 adults. Direct access to trail

Vickers Rental/Canebrake River Cabins★

(304) 664-8350
www.canebrakecabins.com
We offer a choice of (8) cabins/rentals, all in the town of Gilbert.

Wildwood Cabins★

(304) 664-2555
www.wildwoodcabinswv.com
Our cabins are located only 250 yards from the trail.

VISITOR INFO

Gilbert Convention & Visitors Bureau

(304) 664-3477
www.visitgilbertwv.com

Hatfield-McCoy CVB★

(304) 752-6020
hatfieldmccoycvb.com

The official Lodging of the Hatfield-McCoy Trails

Indoor Heated Pool • High Speed Internet • Free Breakfast Bar



2 Central Avenue
Chapmanville, WV

(304) 831-2345 or 1-866-700-7293
www.BestWesternLoganInn.com



**FEATURED ON
DIRT TRAX
TELEVISION!**

GET READY FOR **TRAILFEST!**



TRAILFEST

*Join thousands of off-road
enthusiasts for one of the
premier multi-day riding
events in the country!*

OCTOBER

IN GILBERT, WEST VIRGINIA

NATIONALTRAILFEST.COM





LOGAN POWERSPORT GROUP



KEEFER'S OF LOGAN

Rt. 44 South Jerry West Hwy., Logan, WV
keeferpowersports.net

304-752-2245

WEST VIRGINIA'S KING OF POWERSPORTS



LOGAN
MOTORCYCLE SALES

RT. 44 SOUTH, LOGAN, WV
304-752-4145
www.loganmotorcyclesales.net



27241 U.S. Hwy. 119 North
Belfry, KY
hatfieldmccoypowersports.net

606-237-7311

ROUTE 119 POWERSPORTS

Route 119, Tri-Corn Road
Danville, WV
rt119powersports.net

304-369-7171

RIDE WITH RIDER



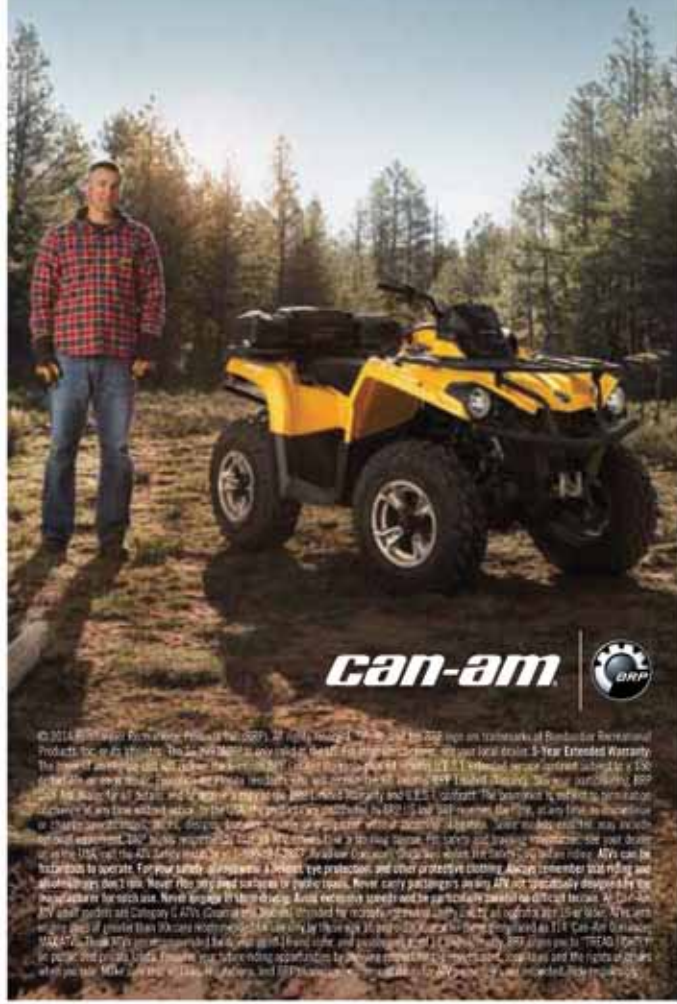
NOTHING BUT LOW COST INSURANCE FOR RIDERS BY RIDERS

Visit Rider.com
or call 1(800)595-6393

Available in Delaware, Indiana, Maryland, Michigan, New Jersey, Ohio, Pennsylvania, Virginia and West Virginia

RAISE YOUR EXPECTATIONS. NOT YOUR PRICE RANGE.

Introducing the all-new Outlander™ L. Industry-leading performance. Precision-engineered handling. Rider-focused design. Everything you've come to expect from Can-Am®. All starting at just \$6,399. All backed by an unheard of 5-year extended warranty. The longest in the industry. Because whether you're hauling, towing, plowing or hitting the trail, you need a machine that more than meets your expectations. Discover the Outlander L 450 and 500 at Can-AmOffroad.com/OutlanderL. **The Ride Says It All.**



can-am



© 2014 Can-Am. Form #1000-0001 (Rev. 02/14). All rights reserved. Can-Am and the ORP logo are trademarks of Bombardier Recreational Products, Inc. or its affiliates. The Can-Am logo is only used in Canada and the United States. See your local dealer. 5-Year Extended Warranty. The power of getting the job done. The power of Can-Am. Discover the all-new Outlander L 450 and 500. All starting at just \$6,399. All backed by an unheard of 5-year extended warranty. The longest in the industry. Because whether you're hauling, towing, plowing or hitting the trail, you need a machine that more than meets your expectations. Discover the Outlander L 450 and 500 at Can-AmOffroad.com/OutlanderL. **The Ride Says It All.** The power of getting the job done. The power of Can-Am. Discover the all-new Outlander L 450 and 500. All starting at just \$6,399. All backed by an unheard of 5-year extended warranty. The longest in the industry. Because whether you're hauling, towing, plowing or hitting the trail, you need a machine that more than meets your expectations. Discover the Outlander L 450 and 500 at Can-AmOffroad.com/OutlanderL. **The Ride Says It All.**

RZR®

570 & 800

RAZOR SHARP PERFORMANCE FOR THE TRAIL



THE ULTIMATE COMBINATION OF POWER, SUSPENSION & AGILITY.

The 50" wide *RZR* revolutionized recreational riding in 2008. Today, the *RZR* 800 and *RZR* 570 are still the only trail-capable Side x Sides. With a low center of gravity, incredible acceleration and Razor Sharp Performance — delivers ultimate combination of power, suspension and agility.

Built for tight trails. Totally unchallenged.

**SEE THE COMPLETE LINE OF
TRAIL CAPABLE POLARIS
VEHICLES AT POLARIS.COM**



POLARIS®

Warning: The Polaris RANGER and RZR are not intended for on-road use. Driver must be at least 16 years old with a valid driver's license to operate. Passengers must be at least 12 years old and tall enough to grasp the hand holds and plant feet firmly on the floor. All SeS drivers should take a safety training course. Contact ROPVA at www.ropva.org or (949) 255-2560 for additional information. Drivers and passengers should always wear helmets, eye protection, protective clothing, and seat belts. Always use ear nets. Be particularly careful on difficult terrain. Never drive on public roads or paved surfaces. Never engage in stunt driving, and avoid excessive speeds and sharp turns. Riding and alcohol/drugs don't mix. Check local laws before riding on trails. ATVs can be hazardous to operate. Polaris adult models are for riders 16 and older. For your safety, always wear a helmet, eye protection and protective clothing, and be sure to take a safety training course. For safety and training information in the U.S., call the SVM at (800) 857-3887. You may also contact your Polaris dealer or call Polaris at (800) 347-3754. ©2013 Polaris Industries Inc.

THE NEW 2016

TERYX 4™



**BUILT STRONG FOR
ADVENTURE
SEEKERS**



**REDESIGNED FRONT END WITH
AGGRESSIVE SPORTY STYLING**

**OPTIMIZED FOX PODIUM 2.0 SHOCK
SETTINGS WITH ADJUSTABLE COMPRESSION**

**INDUSTRY LEADING KAWASAKI STRONG
3-YEAR LIMITED WARRANTY**

KAWASAKI CARES: Always wear protective gear appropriate for the use of this vehicle. Never operate under the influence of drugs or alcohol. Protect the environment. The Kawasaki Teryx 4™ side x side is an off-highway vehicle only, and is not designed, equipped, or manufactured for use on public streets; roads or highways. Obey the laws and regulations that control the use of your vehicle. Read Owner's Manual and all on product warnings. ©2015 Kawasaki Motors Corp., U.S.A.

Kawasaki
Let the good times roll.®

Dare to Dance with the Devil



PRESENTED BY

**Hatfield
McCoy
Trails**

www.TrailsHeaven.com

Experience "The Devil's Den" ...if you dare!

Ride with the spirit of "The Devil" through the hills and hollows of Southern West Virginia, where moonshine and mayhem helped ignite the infamous 19th Century Hatfield-McCoy Feud.



Throttle your bike up the tight switchbacks of Horsepen Mountain and loop around the same majestic Poplar tree three times before reaching the mountain's crest.

Enjoy over 1,000 miles of winding, twisting, history-packed roads in the backwoods that were once home to William Anderson "Devil Anse" Hatfield!

Know Before You Go

- All roads labeled on the inside map are West Virginia County Roads, State Roads or Interstate Highways. All State and Federal Laws apply while riding these public roads.
- Helmets are required by motorcycle riders and passengers in the State of West Virginia.
- Proof of insurance, vehicle registration and a valid driver's license are required to operate your street or dual sport bike on any of these public roads. *(No special permit is required to ride on any of these public roads.)*
- If you leave the public roads and enter upon any of the Hatfield McCoy off-road trail systems, each operator and passenger must purchase a permit sticker to display on their helmet and otherwise abide by all of the rules and regulations applicable to the Hatfield McCoy Trail System. *Visit www.trailsheaven.com for more information on off road riding.*
- Hatfield McCoy Trails offer over 800 miles of off-road, dual sport trails. The cities and towns which offer access to these off-road trails are labeled on the inside map in RED. The public roads highlighted in this brochure wind through scenic and historic southern West Virginia mountains.

Visit www.trailsheaven.com for more information

Hatfield McCoy Trails

P.O. Box 146, Man, WV 25635



DIG IN YOUR WHEELS

WWW.TRAILSHEAVEN.COM