



Three Interconnected Trail Systems
300+ Miles of Trail
9 - Community Connectors
1-800-592-2217



Pinnacle Creek Community Connectors
 Town of Kimball
 City of Mullens
 Town of Pineville
 City of Welch

Indian Ridge Community Connectors
 Town of Keystone
 Town of Northfork

Pocahontas Community Connectors
 Town of Bramwell
 Town of Matoaka
 Montcalm

Trail Rules

USER PERMITS are required for all operators and passengers. Everyone must wear a DOT, SNELL or other approved helmet and eye protection.

No child under the age of 6 (six) years allowed on any trail.
ABSOLUTELY NO BOOSTER SEATS OR CAR SEATS ALLOWED.
 If your child is required by state law to use a booster seat or car seat in a vehicle then your child cannot ride as a passenger on the trails.

All operators and passengers on an ATV, UTV or off-road motorcycle must follow manufacturers' recommendations.

ABSOLUTELY NO ALCOHOLIC beverages may be consumed or carried.

Trails are only open during daylight hours. Obey all posted traffic signs, no glass containers, no fires. Stay on marked trails.

Never go off trail. No competitions.

All persons under the age of 16 must remain within sight of their parent or guardian at all times. Violation of any rule is subject to a misdemeanor.

Community Connector Etiquette

Remember – People Live In These Communities

Riding in Town is not a right, it is a privilege

Slow down when entering a community

Watch for Children playing

Keep engines as quiet as possible

Try not to kick up dust

Be courteous

HMT APP

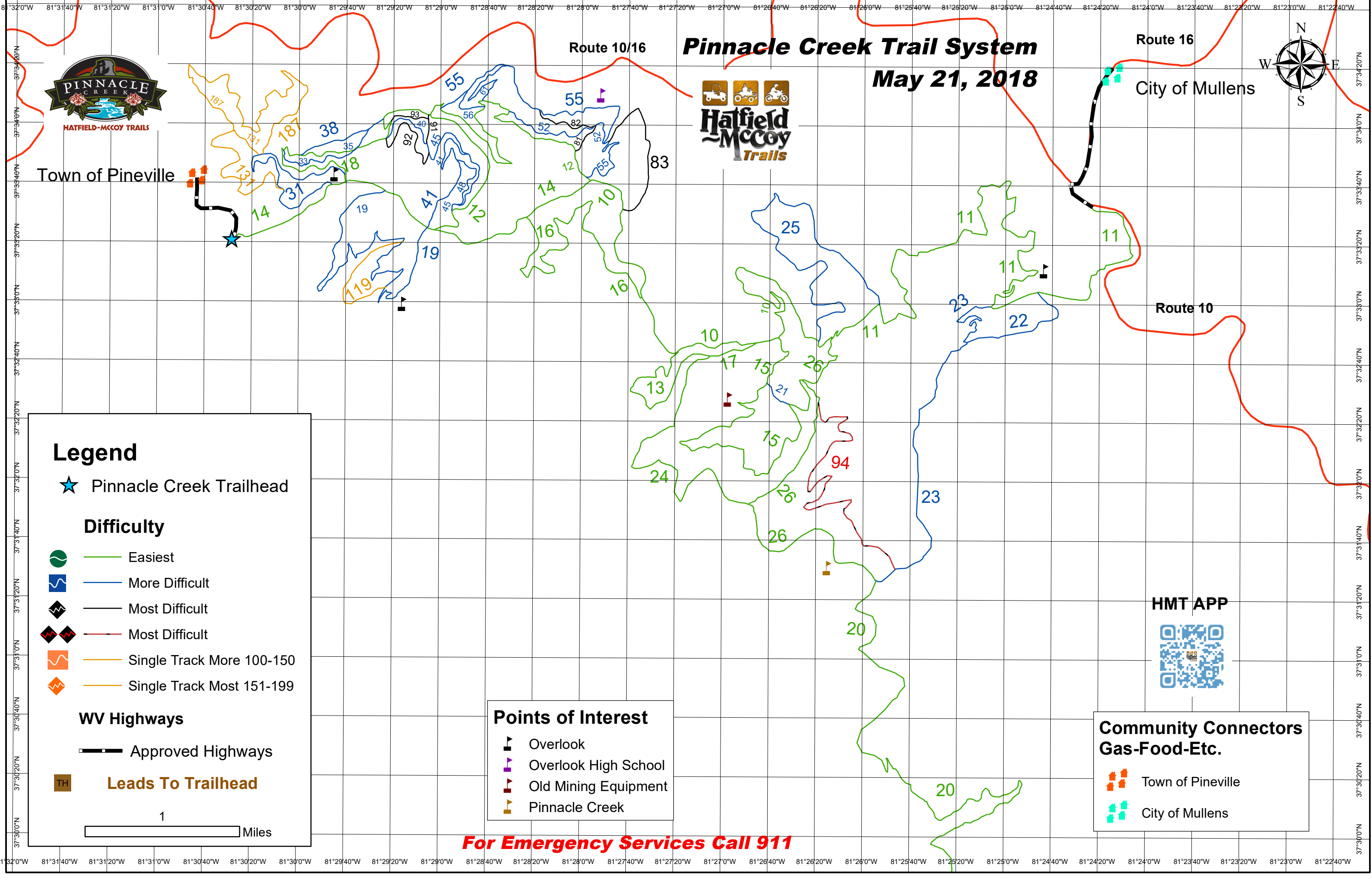
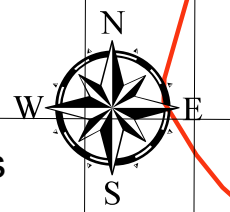


For Emergency Services Call 911



Pinnacle Creek Trail System

May 21, 2018



Legend

- ★ Pinnacle Creek Trailhead
 - Difficulty**
 - Easiest
 - More Difficult
 - Most Difficult
 - Most Difficult
 - Single Track More 100-150
 - Single Track Most 151-199
 - WV Highways**
 - Approved Highways
 - Leads To Trailhead
- 1 Miles

Points of Interest

- Overlook
- Overlook High School
- Old Mining Equipment
- Pinnacle Creek

HMT APP



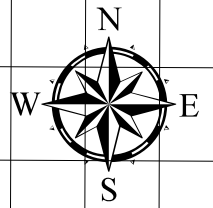
Community Connectors Gas-Food-Etc.

- Town of Pineville
- City of Mullens

For Emergency Services Call 911

Pinnacle Creek/Indian Ridge Connector

June, 2018



Legend

Difficulty

- Easiest
- More Difficult
- Most Difficult
- Most Difficult
- Single Track More 100-150
- Single Track Most 151-199

WV Highways

- Approved Highways
- Leads To Trailhead

1 Miles

HMT APP

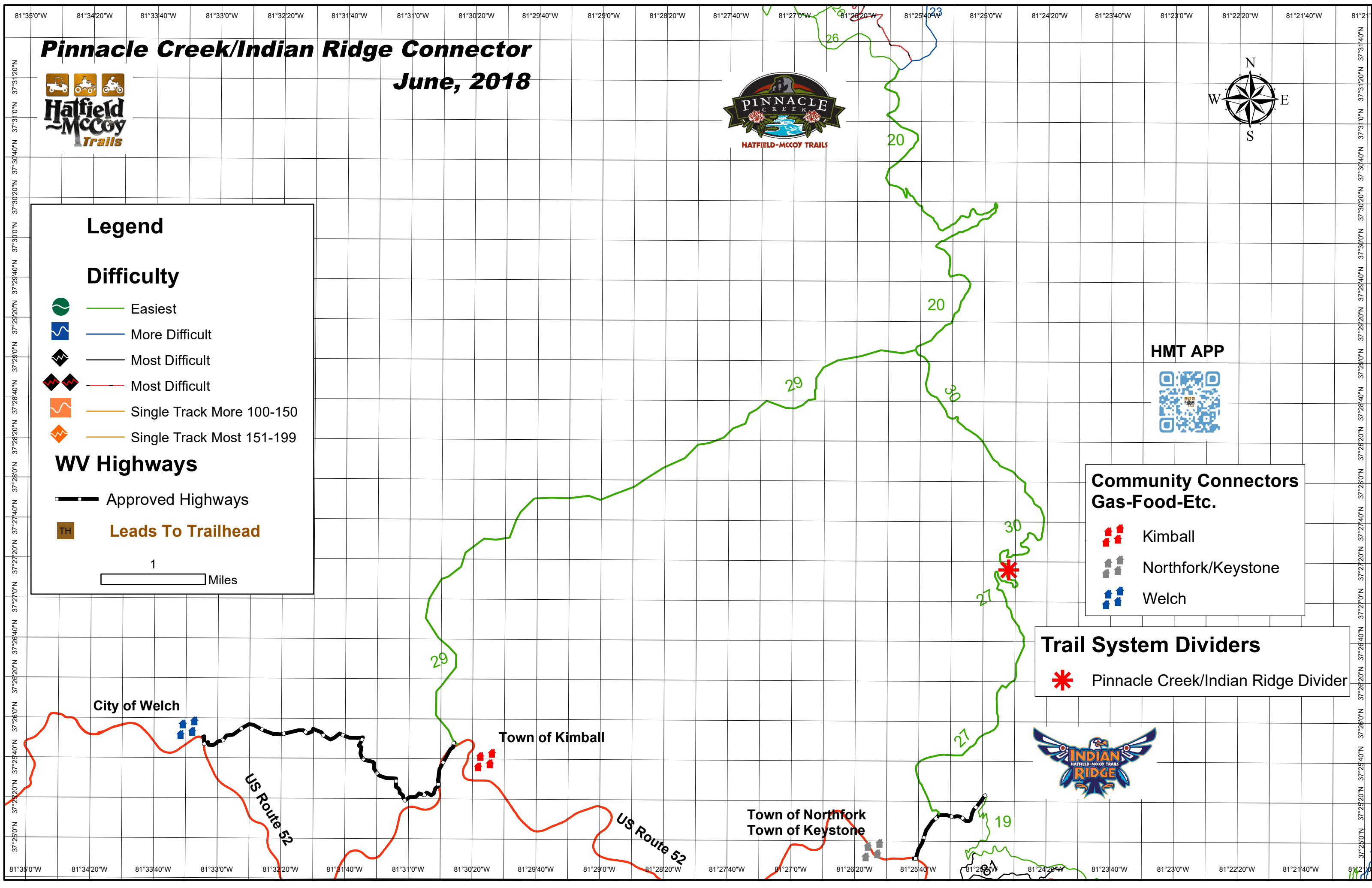


Community Connectors Gas-Food-Etc.

- Kimball
- Northfork/Keystone
- Welch

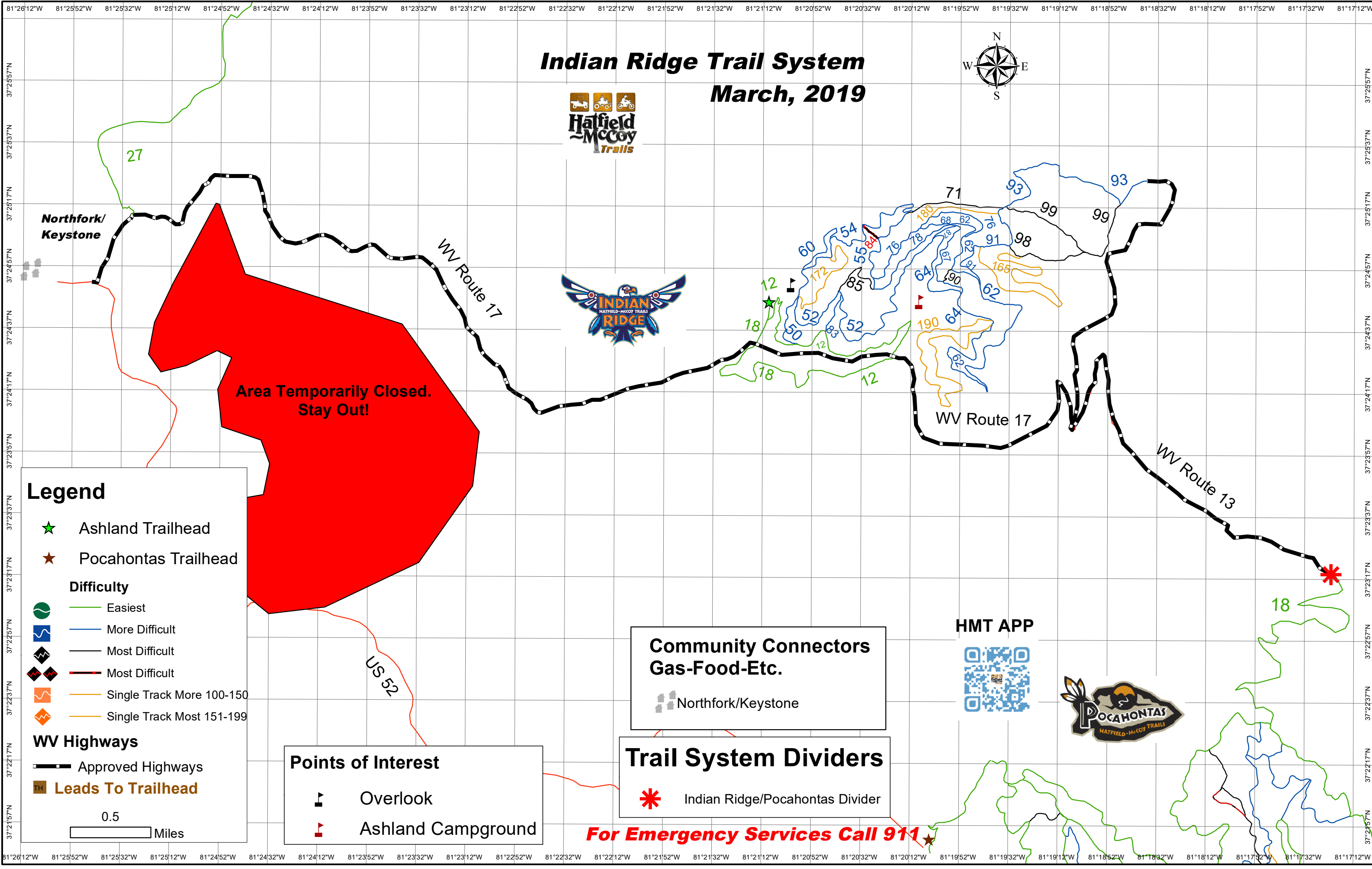
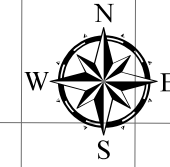
Trail System Dividers

- Pinnacle Creek/Indian Ridge Divider



Indian Ridge Trail System

March, 2019



Legend

- ★ Ashland Trailhead
- ★ Pocahontas Trailhead

Difficulty

- Green line: Easiest
- Blue line: More Difficult
- Black line: Most Difficult
- Black line with red border: Most Difficult
- Orange line: Single Track More 100-150
- Yellow line: Single Track Most 151-199

WV Highways

- Black dashed line: Approved Highways
- TH icon: Leads To Trailhead

0.5 Miles

Points of Interest

- Black triangle: Overlook
- Red triangle: Ashland Campground

Community Connectors

Gas-Food-Etc.

Northfork/Keystone

Trail System Dividers

Indian Ridge/Pocahontas Divider

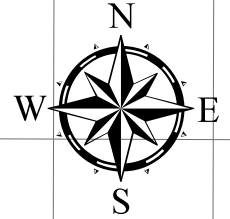
HMT APP



For Emergency Services Call 911

Pocahontas Trail System

March, 2019



Route 13/1

Route 13

**Danger
Active Mine Site
Stay Out**

Points of Interest

- Pond
- Overlook

HMT APP



To Matoaka
8.5 Miles ---->

Montcalm

Town of Bramwell

Legend

- Pocahontas Trailhead

Difficulty

- Easiest
- More Difficult
- Most Difficult
- Most Difficult
- Single Track More 100-150
- Single Track Most 151-199

WV Highways

- Approved Highways
- Leads To Trailhead

0.5 Miles

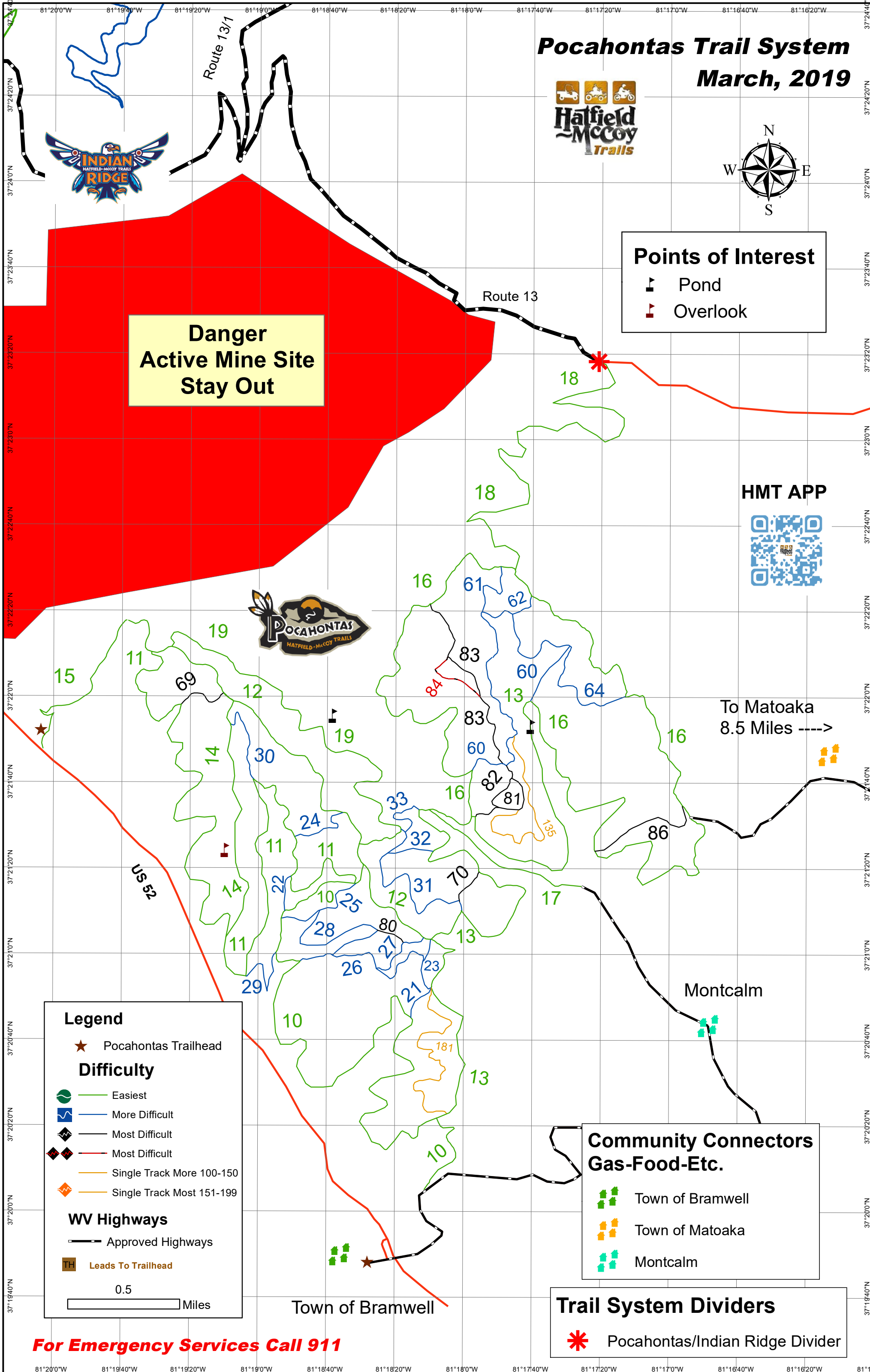
**Community Connectors
Gas-Food-Etc.**

- Town of Bramwell
- Town of Matoaka
- Montcalm

Trail System Dividers

- Pocahontas/Indian Ridge Divider

For Emergency Services Call 911



PROGRESSIVE[®]



POLARIS[®]



**Hatfield
McCoy
Trails**

TrailsHeaven.com

1-800-592-2217